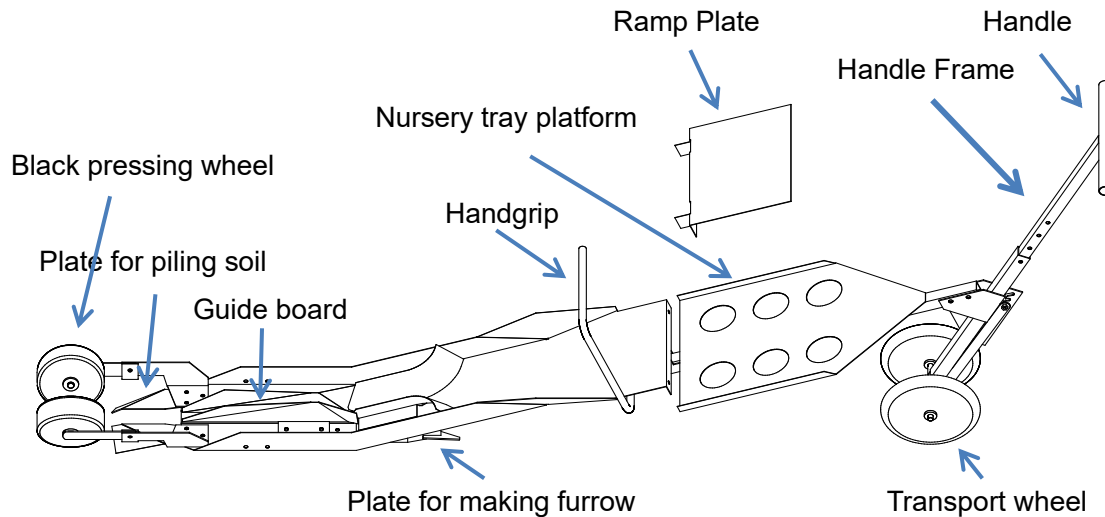


Instruction manual of HP-16 Transplanter

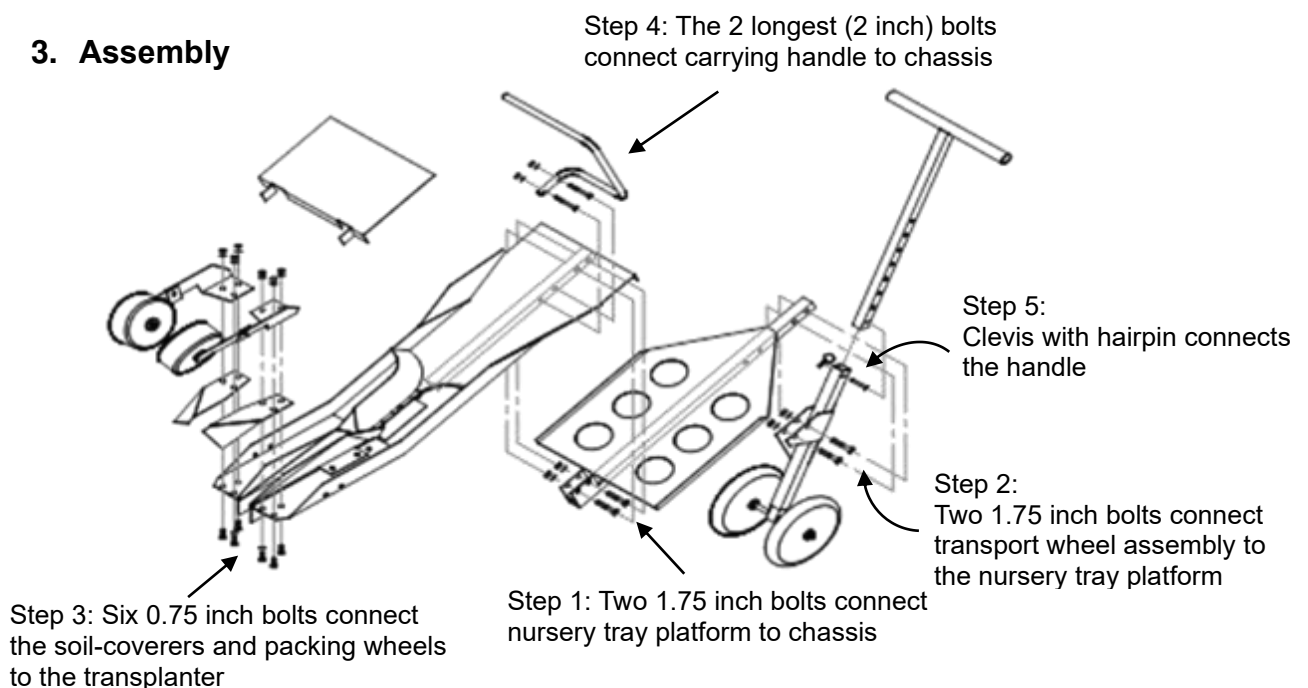
1. Name of Parts



2. Specification

Model	HP-16
Size	1,995~2,063mm Length / 315mm Width / 879~1,056mm Height
Weight	12kg Weight
Application for	CP303 / LP303-10 / LP303-15

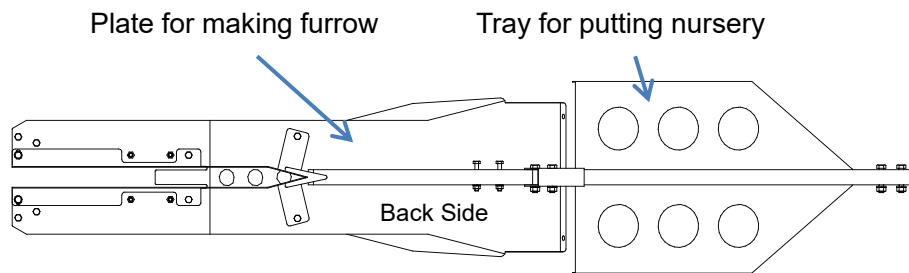
3. Assembly



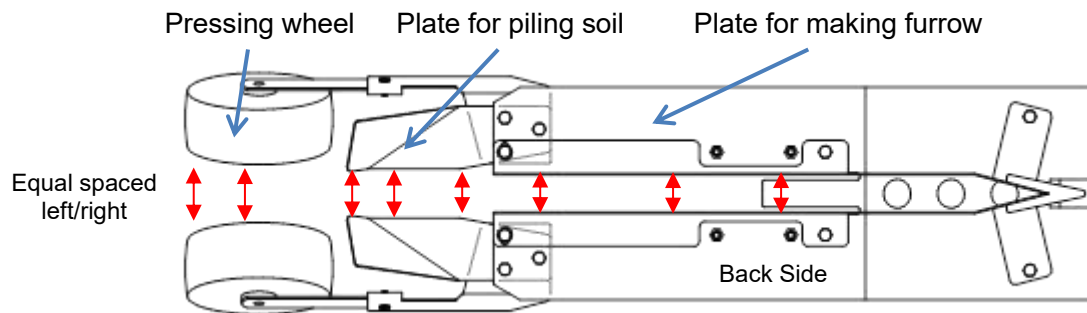
4. Preparing

· Assembly

- 1) Ensure that below parts are aligned straight. If not, transplanter will not function.



- 2) Pay attention to the placement and orientation of left and right "Pressing wheel" and "Plate for piling soil". Note that you can adjust these from left to right.



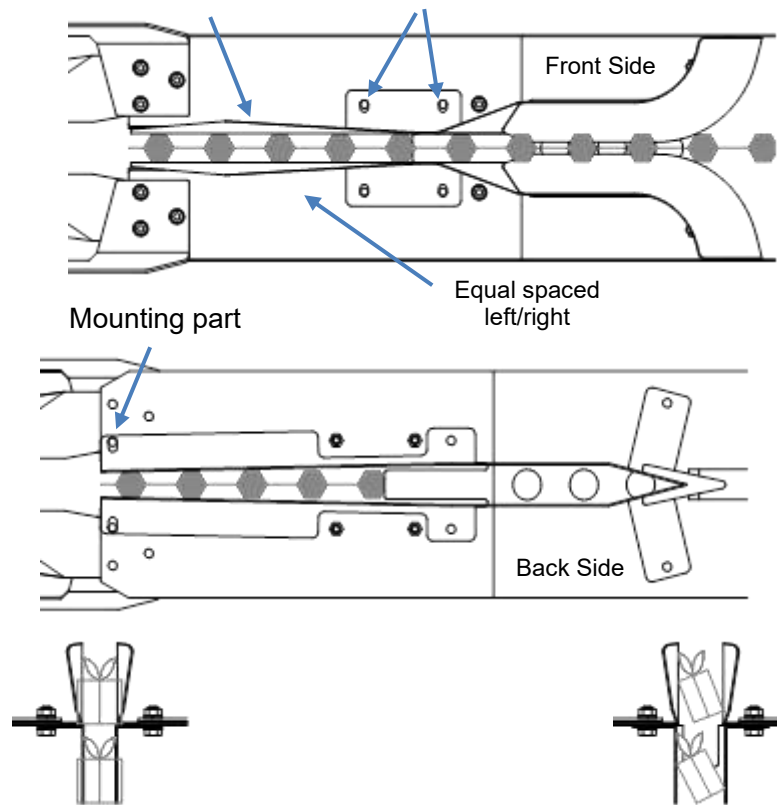
· Adjusting

- 1) Adjust the distance of the "Plate for piling soil" and "Plate for making furrow" by loosening screws to make room for the diameter of the pots.

Guide board

Mounting part

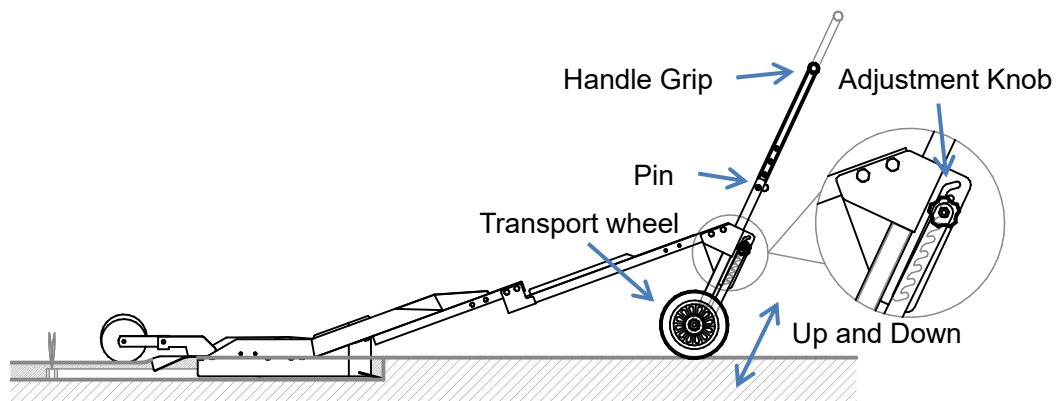
Pulcat™



It is too narrow. It will not drop a pot

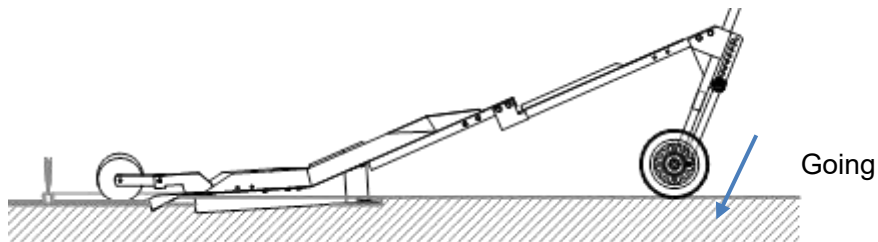
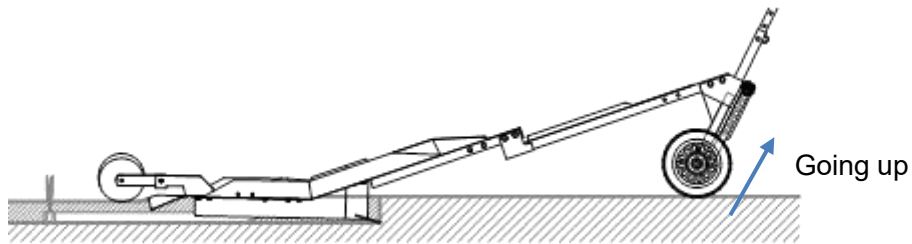
It is too wide. Pot may not be straight

- 2) Adjust the "Handle Grip" to be suitable position by changing pin position.
- 3) Adjust the "Adjustment Knob" position according to planting depth. 3rd position from top is standard.

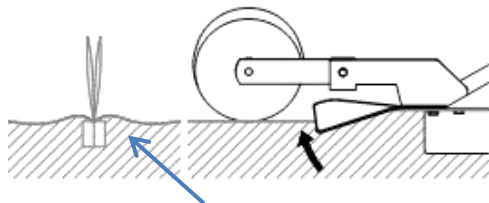


Above is standard position used when transplanting. With the adjustment knob at the top so that the transplanter is operating as deeply as possible. If needed, you may adjust the "Adjustment knob position" to suit different crops and different conditions.

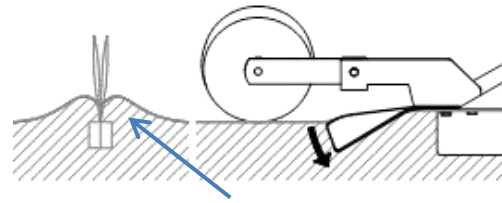
Pulcat™



- 4) Adjust the amount of soil being pushed over the furrow by bending the “Plate for piling soil” by hand.

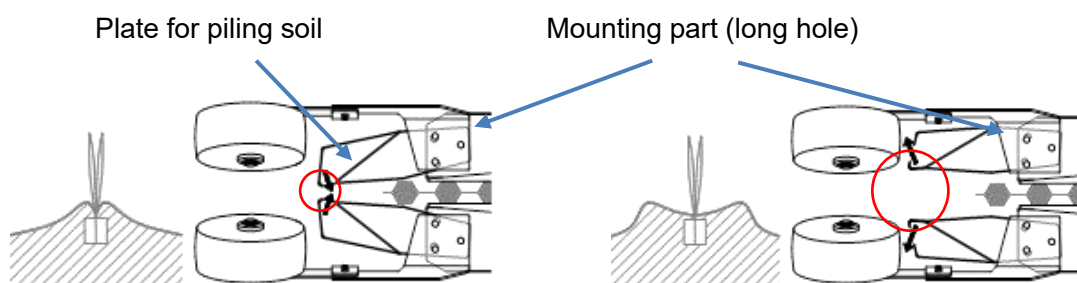


Bent up : Less soil will be moved



Bent down : More soil will be moved

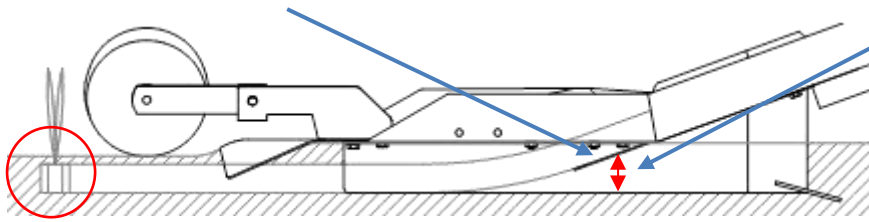
- 5) Adjust the angle of “Plate for piling soil” by loosening a screw.



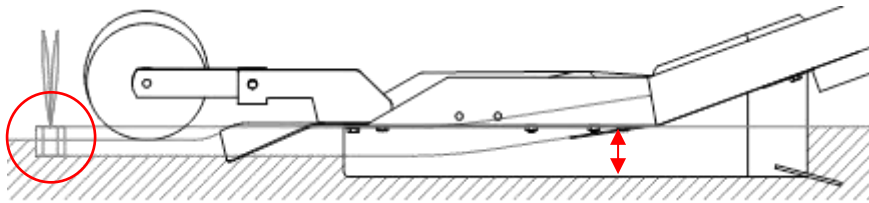
Narrow : Soil is piled close to plants

Wide : Soil is piled further from plants

- 6) Adjust the tongue plate on the “Plate for making furrow” by hand for height (depth).



Bending the tongue plate down will set plants more deeply as above diagram.



Bending the tongue plate up will be set plants more shallow as above diagram.

5. How to use

- Preparing Seedling Trays for Transplanting

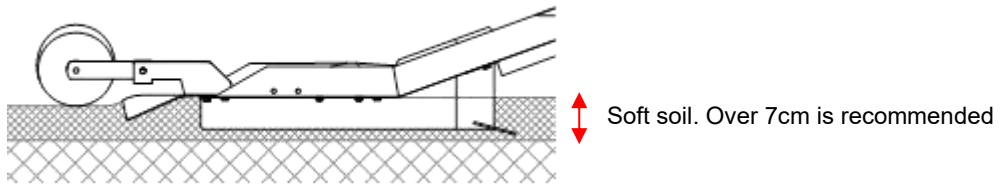
Irrigate the seedlings 3 or 4 hours before transplanting. 2 liter of water per tray is recommended. Wet soil will make the Chainpot heavier and assist in proper of potting mix around the roots.

If not irrigating, it may be the shallow planting because Chainpot will be lighter. So, watering is very important.

- Preparing the Field

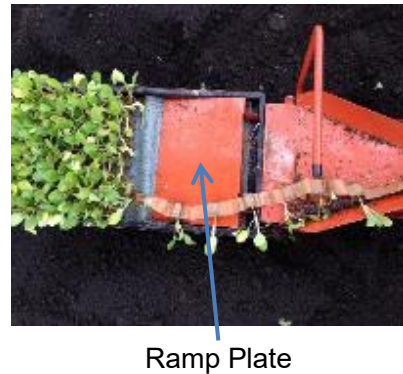
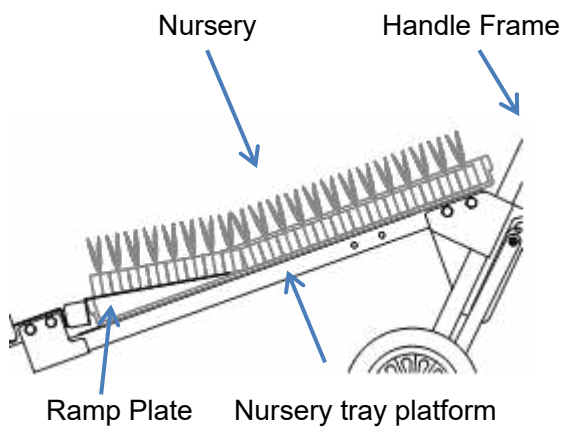
Before transplanting, your field or beds should be prepared by rototilling. Loose soil that “flows well” is best. If the soil is clumpy or hard, the plants may not be set well in the soil. Also, fields with many stones will make transplanting more difficult. A smooth, level field is best. Preparing the field well is very important to maximize transplanter performance.

Pulcat™

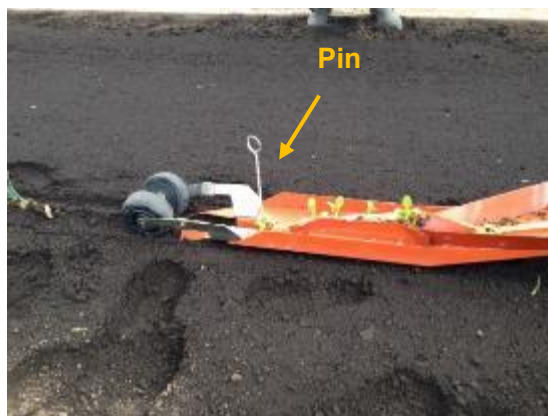


- Transplanting

- 1) Slide the "Ramp Plate" under the plants in the nursery tray.

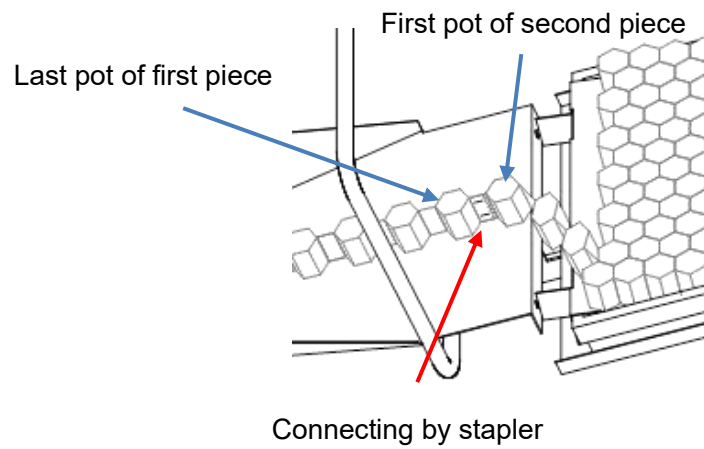


- 2) Pull the transplanter into your field or bed to start creating a furrow.
Pull the Chainpot from the end of the tray and feed it down into the furrow. The first pot can be fixed by a narrow stake or pin as shown. Some Growers simply push soil around the first few plants rather than use a pin.

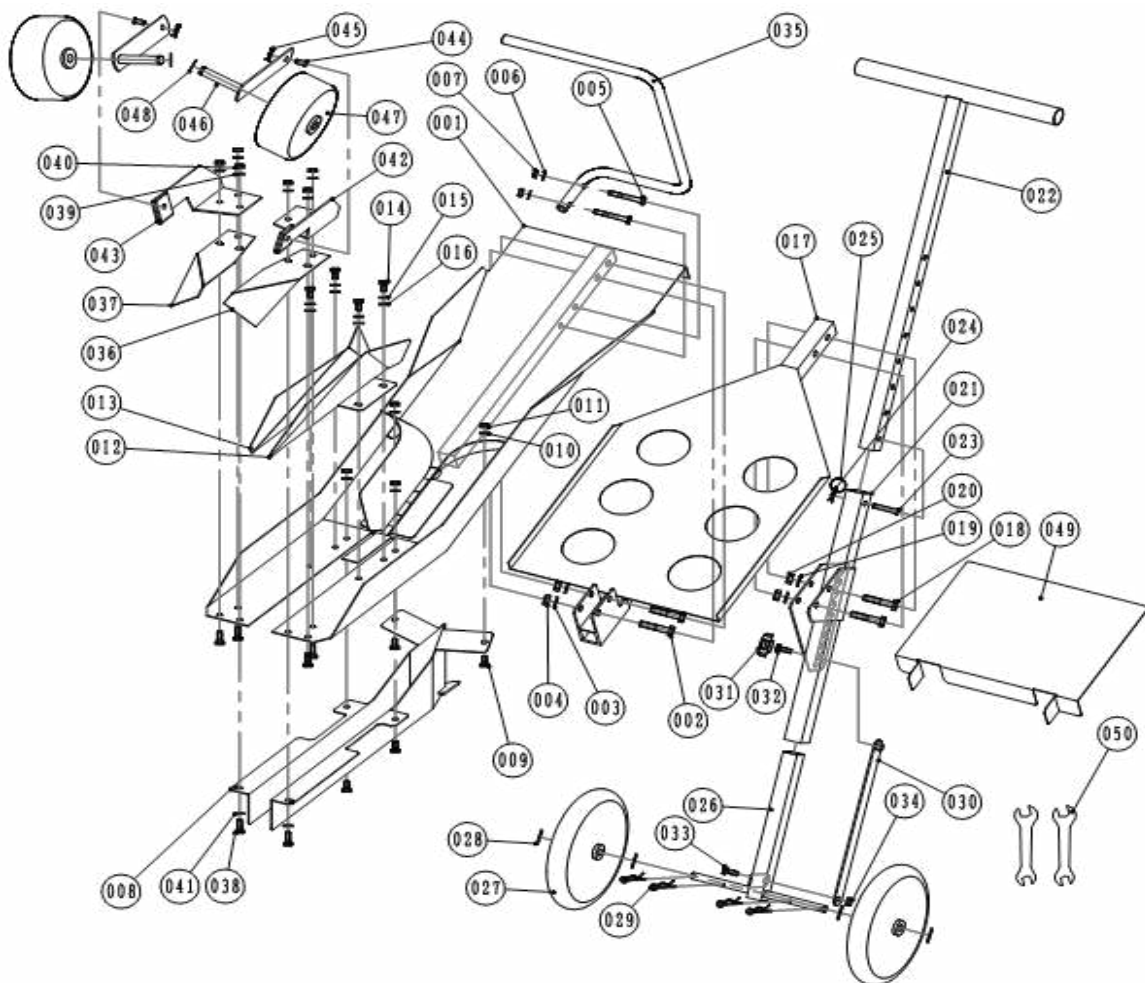


- 3) After you finish the first tray, you can connect a second Chainpot by using a

stapler or repeat the process of using a pin or piling soil.



6. Part List



Parts No	Name of Parts	Quantity		Parts No	Name of Parts	Quantity
001	Transplanter chassis	1		026	Axle Assembly	1
002	Hex head bolt M8 × 40	2		027	Transport wheel	2
003	Lock washer	2		028	Flat washer 10	4
004	Hex nut M8	2		029	Retaining clips SSP-10	4
005	Hex head bolt M6 × 40	2		030	Adjustment plate for height of wheel	1
006	Lock washer	2		031	Adjustment knob	1
007	Hex nut M6	2		032	Hex head bolt M6 × 16	1
008	Furrow Opener	1		033	Hex head bolt M6 × 16	1
009	Hex head bolt M6 × 12	4		034	Nylon nut M6	1
010	Lock washer	4		035	Carrying handle	1
011	Hex nut M6	4		036	Right furrow closer	1
012	Right Guide board	1		037	Left furrow closer	1
013	Left Guide board	1		038	Hex head bolt M6 × 16	6
014	Hex head bolt M6 × 12	4		039	Lock washer	6
015	Lock washer	4		040	Lock washer	6
016	Flat washer	4		041	Hex nut M6	2
017	Seedling tray platform	1		042	Right braket for black press wheel	1
018	Hex nut M8 × 40	2		043	Left braket for black press wheel	1
019	Lock washer	2		044	Clevis pin 6 × 15	1
020	Hex nut M8	2		045	Retaining clip SSP-6	1
021	Wheel/Handle Tube	1		046	Right/Left axle assembly for black press wheels	2
022	Handle	1		047	Black press wheel	2
023	Clevis pin 6 × 3 5	1		048	E-Clips Type 10	2
024	Retaining clip SSP-6	1		049	Transplant Ramp plate	1
025	Ring 20	1		050	Open-end wrench	2